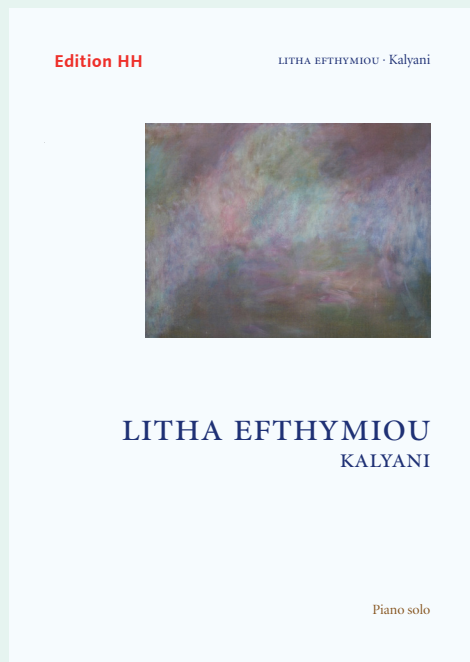


# LITHA EFTHYMIΟΥ

## Kalyani

for piano



Litha Efthymiou (\*1980)  
Kalyani  
Duration c.6'  
HH378.SOL — iv/7 pages

## ‘Kalyani’

is a Melakarta raga in the southern Indian musical system, from which the main theme of this piece derives. Fragments of the raga are heard in various guises throughout the work, sometimes presented aggressively in a percussive context, at other times in a more serene and melancholy manner.

# www.editionhh.co.uk

“Edition HH should be applauded for their willingness to seek out rare but wholly worthwhile repertoire, and their knack of bringing it to our attention through extremely high quality and usable editions.”

*The Consort*

Available in all good music shops

WORLD WIDE DISTRIBUTION

mds  
music distribution services gmbh  
Carl Zeiss-Strasse 1  
55129 MAINZ  
GERMANY

+49 (0) 6131 505 100  
+49 (0) 6131 505 115/116

order@mds-partner.com



# Edition HH

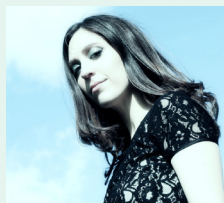
Edition HH Ltd  
68 West End  
Launton Nr. Bicester  
Oxfordshire  
OX26 5DG

Tel: +44 (0) 1869 241 672  
Fax: +44 (0) 1869 690 013  
Email: [sales@editionhh.co.uk](mailto:sales@editionhh.co.uk)

# LITHA EFTHYMIΟΥ Kalyani

## KALYANI

LITHA EFTHYMIΟΥ  
(\*1980)



Litha Efthymiou

PIANO SOLO

Mysteriously  $\text{♩} = 100$

Hit strings inside piano with palm of hand, or with flat, rubber object.

8<sup>va</sup>:1 8<sup>va</sup>:1 8<sup>va</sup>:1

(KBD) 8<sup>va</sup>:1

9 *ff* 6 6 6

Hit strings inside piano

8<sup>va</sup>:1 8<sup>va</sup>:1

14 *ff* 6

KBD 6

Hit strings inside piano

8<sup>va</sup>:1 8<sup>va</sup>:1

20 *mf* KBD

Hit strings inside piano

8<sup>va</sup>:1